

# BUTTERFLY LOVER'S

## NATIVE PLANT GARDEN

NATIVE PLANTS ARE A GREAT NECTAR SOURCE FOR ME AND MY COLORFUL FRIENDS.

THIS GARDEN HAS COLOR THROUGHOUT THE SPRING AND SUMMER.

ENJOY THESE EASY TO GROW, LOW MAINTENANCE PLANTS.



[www.abnativeplants.com](http://www.abnativeplants.com)

### Ornamentals

- 1 **Deciduous Trees**  
Acer rubrum 'Autumn Flame'  
Acer saccharum  
Cercis canadensis  
Cornus alternifolia  
Nyssa sylvatica  
Nyssa sylvatica 'Wildfire'  
Oxydendrum arborescens  
Quercus bicolor
- 2 **Conifers**  
Juniperus virginiana
- 3 **Vines**  
Aristolochia macrophylla  
Lonicera sempervirens  
Parthenocissus quinquefolia  
Wisteria frutescens 'Amethyst Falls'
- 4 **Tall Shrubs**  
Azalea viscosum  
Salix discolor  
Sambucus canadensis 'Adams'  
Viburnum trilobum
- 5 **Medium Shrubs**  
Cephalanthus occidentalis  
Clethra alnifolia  
Cornus racemosa 'Geauge'  
Cornus sericea 'Cardinal'  
Hydrangea arborescens  
Lindera benzoin  
Prunus maritima  
Rosa palustris  
Rubrus odorata  
Vaccinium corymbosum 'Blue Jay'  
Vaccinium corymbosum 'Northland'  
Viburnum dentatum 'Blue Blaze'
- 6 **Small Shrubs**  
Ceanothus Americanus  
Diervilla lonicera  
Diervilla lonicera 'Copper'  
Fothergilla major  
Hypericum kalmianum  
Potentilla fruticosa 'Coronation Triumph'  
Spiraea tomentosum  
Vaccinium angustifolium 'Brunswick'  
Yucca filamentosa

### Perennials

- 7 **Medium to Tall Perennials**  
Asclepias incarnata  
Asclepias tuberosa  
Aster laevis 'Bluebird'  
Aster novae-angliae 'Alma Potschke'  
Baptisia australis  
Chelone glabra  
Cimicifuga racemosa  
Coreopsis verticillata  
Echinacea purpurea 'Ruby Star'  
Echinacea purpurea 'Prairie Splendor™'  
Eupatorium dubium 'Little Joe'  
Heliopsis helianthoides 'Summer Nights'  
Liatris scariosa var. novae-angliae  
Lobelia cardinalis  
Lupinus perennis  
Mertensia virginica  
Monarda didyma 'Jacob Cline'  
Monarda fistulosa  
Penstemon digitalis 'Husker Red'  
Penstemon smallii  
Phlox maculata 'Rosalind'  
Phlox paniculata 'Eva Cullum'  
Phlox paniculata 'Shortwood'  
Phlox pilosa 'Lavender Cloud'  
Physostegia virginiana 'Miss Manners'  
Pycnanthemum muticum  
Rudbeckia triloba  
Salvia lyrata 'Purple Knockout'  
Solidago rugosa 'Fireworks'  
Thermopsis villosa  
Vernonia noveboracensis  
Veronicastrum virginicum
- 8 **Low Perennials**  
Aquilegia canadensis 'Corbett'  
Aquilegia canadensis 'Little Lanterns'  
Aquilegia canadensis 'Pink Lanterns'  
Asarum canadense  
Aster divaricatus  
Callirhoe involucrata  
Chrysogonum virginianum  
Dicentra eximia  
Epigaea repens  
Eupatorium coelestinum  
Geranium maculatum 'Espresso'  
Meehania cordata  
Phlox divaricata 'London Grove Blue'  
Phlox stolonifera 'Fran's Purple'  
Phlox subulata 'Drummond Pink'  
Phlox subulata 'Emerald Pink'  
Phlox divaricata 'Parksville Beach'  
Polemonium reptans 'Stairway to Heaven'  
Scutellaria ovata  
Sedum nevi  
Sisyrinchium angustifolium 'Lucerne'  
Stylophorum diphyllum  
Viola labradorica
- 9 **Ornamental Grasses**
- 9 **Low Grasses**  
Carex pensylvanica  
Carex stricta  
Carex laxiculmus Blue Bunny™  
Sporobolus heterolopsis

# American Beauties

## NATIVE PLANTS®

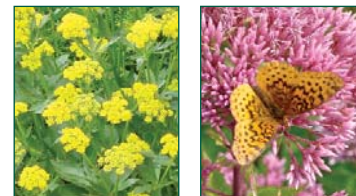
Bringing Life to Your Garden™



### Why Choose American Beauties Native Plants?

- Native Plants are naturally adapted to your area
- They provide food and shelter in your landscape
- Our plants attract birds and butterflies
- They're low maintenance with few disease problems
- Native Plants are environmentally friendly
- They solve your landscape problems successfully

[www.abnativeplants.com](http://www.abnativeplants.com)



- Easy to use planting tips and landscape plans
- Native plant tips that solve landscape problems
- Easy to use backyard habitat information
- Garden centers carrying AB Native Plants
- National Wildlife Federation links and information



### American Beauties proudly supports National Wildlife Federation

Become part of National Wildlife Federation's Certified Wildlife Habitat™ network, and you'll join the thousands of gardeners who have been recognized for creating havens for local wildlife in their own yards. Visit [www.nwf.org/backyard](http://www.nwf.org/backyard) to certify your yard today!

# American Beauties

## NATIVE PLANTS®

Bringing Life to Your Garden™



# BIRD LOVER'S

## NATIVE PLANT GARDEN



### Ornamentals

- 1 **Deciduous Trees**  
Acer rubrum 'Autumn Flame'  
Acer saccharum  
Amelanchier canadensis  
Betula nigra 'Heritage'  
Cercis canadensis  
Chionanthus virginicus  
Cornus alternifolia  
Cornus florida 'Cloud 9'  
Magnolia virginiana 'Moon Glow'  
Nyssa sylvatica  
Oxydendrum arborescens  
Quercus bicolor
- 2 **Conifers**  
Pinus strobus  
Juniperus virginiana  
Juniperus communis 'Blueberry Delight'™
- 3 **Vines**  
Campsis radicans  
Lonicera sempervirens  
Parthenocissus quinquefolia
- 4 **Tall Shrubs**  
Aronia arbutifolia 'Brilliantissima'  
Hamamelis virginiana  
Ilex verticillata  
Rhododendron maximum 'Independence'  
Salix discolor  
Sambucus canadensis 'Adams'  
Viburnum prunifolium  
Viburnum trilobum
- 5 **Medium Shrubs**  
Cephalanthus occidentalis  
Cornus racemosa 'Geaue'  
Cornus sericea 'Cardinal'  
Hydrangea arborescens  
Hydrangea quercifolia  
Lindera benzoin  
Myrica pensylvanica  
Physocarpus opulifolius 'Center Glow'  
Prunus maritima  
Rosa virginiana  
Rubus odorata  
Vaccinium corymbosum 'Blue Jay'  
Vaccinium corymbosum 'Northland'  
Viburnum dentatum 'Blue Blaze'  
Viburnum nudum 'Winterthur'
- 6 **Small Shrubs**  
Arcostaphylos uva-ursi 'Massachusetts'  
Chamaecyparis thyoides 'Top Point'  
Cornus canadensis  
Diervilla lonicera  
Diervilla lonicera 'Copper'  
Hypericum kalmianum  
Ilex glabra 'Densa'  
Spiraea tomentosum  
Vaccinium angustifolium 'Brunswick'  
Yucca filamentosa

### Perennials

- 7 **Medium to Tall Perennials**  
Baptisia australis  
Echinacea purpurea 'Ruby Star'  
Echinacea purpurea 'Prairie Splendor'  
Heliopsis helianthoides 'Summer Nights'  
Hibiscus moscheutos  
Liatris scariosa var. novae-angliae  
Lobelia cardinalis  
Onoclea fruticosa 'Fireworks'  
Penstemon smallii  
Phlox paniculata 'Eva Cullum'  
Phlox pilosa 'Lavender Cloud'  
Rudbeckia triloba  
Solidago rugosa 'Fireworks'  
Thermopsis villosa  
Trollius laxus  
Veronicastrum virginicum
- 8 **Low Perennials**  
Callirhoe involucrata  
Heuchera villosa 'Bronze Wave'  
Phlox divaricata 'Manita'  
Phlox subulata 'Drummond Pink'

### Ornamental Grasses

- 9 **Medium to Tall Grasses**  
Chasmanthium latifolium  
Panicum virgatum 'Northwind'  
Panicum virgatum 'Shenandoah'  
Sorghastrum nutans 'Sioux Blue'
- 10 **Low Grasses**  
Carex appalachica  
Carex laxiculmus Bunny Blue™  
Carex pensylvanica  
Carex stricta  
Schizachyrium scoparium 'The Blues'  
Sporobolus heterolepis

# SHADE

## NATIVE PLANT GARDEN



### Ornamentals

- 1 **Deciduous Trees**  
Cornus alternifolia  
Nyssa sylvatica
- 2 **Tall Shrubs**  
Kalmia latifolia 'Pink Charm'  
Rhododendron maximum 'Independence'  
Viburnum prunifolium
- 3 **Medium Shrubs**  
Hydrangea quercifolia  
Myrica pensylvanica  
Vaccinium corymbosum 'Blue Jay'  
Vaccinium corymbosum 'Northland'  
Viburnum nudum 'Winterthur'
- 4 **Small Shrubs**  
Arcostaphylos uva-ursi 'Massachusetts'  
Diervilla lonicera  
Diervilla lonicera 'Copper'  
Itea virginica 'Henry's Garnet'  
Pachysandra procumbens  
Vaccinium angustifolium 'Brunswick'
- Perennials**
- 5 **Medium Perennials**  
Cimicifuga racemosa  
Phlox pilosa 'Lavender Cloud'  
Trollius laxus
- 6 **Low Perennials**  
Aquilegia Canadensis 'Corbett'  
Aquilegia Canadensis 'Little Lanterns'  
Aquilegia Canadensis 'Pink Lanterns'  
Asarum canadense  
Aster divaricatus  
Athyrium filix-femina 'Lady in Red'  
Chrysogonum virginianum  
Dryopteris marginalis  
Geranium maculatum 'Espresso'  
Heuchera americana 'Dale's Strain'  
Heuchera villosa 'Bronze Wave'  
Iris cristata  
Iris cristata 'Alba'  
Polystichum aristichroides  
Phlox divaricata 'Manita'  
Scutellaria ovata  
Sedum nevi  
Sedum ternatum 'Larinem Park'  
Senecio aureus  
Spigelia marilandica  
Stylophorum diphyllum  
Tiarella cordifolia 'Running Tapestry'
- Ornamental Grasses**
- 7 **Medium to Tall Grasses**  
Chasmanthium latifolium
- 8 **Low Grasses**  
Carex appalachica  
Carex laxiculmus Blue Bunny™  
Carex pensylvanica

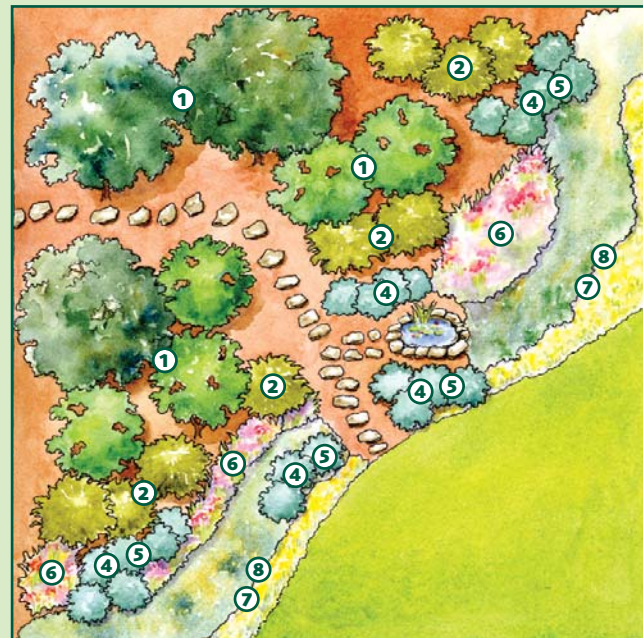
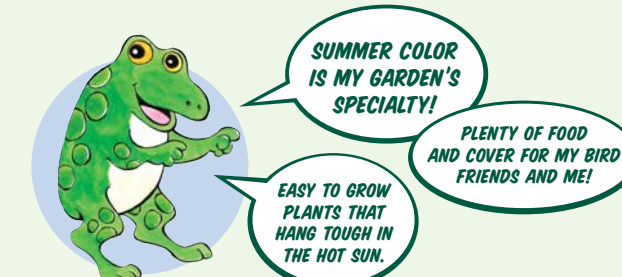
### Plant Tips

**American Beauties Native Plants** are drought tolerant once they get established! Be sure to water them deeply and regularly their first season. Consult with your local independent Garden Center if you have any concerns about watering as local conditions vary.

If tree roots present a problem when planting spread a layer of organic compost several inches thick to help your new plants get established.

# RAIN

## NATIVE PLANT GARDEN



### Ornamentals

- 1 **Deciduous Trees**  
Acer rubrum 'Autumn Flame'  
Amelanchier canadensis  
Betula nigra 'Heritage'  
Chionanthus virginicus  
Nyssa sylvatica 'Wildfire'  
Quercus bicolor
- 2 **Tall Shrubs**  
Ilex verticillata  
Viburnum trilobum
- 3 **Vines**  
Wisteria frutescens 'Amethyst Falls'
- 4 **Medium Shrubs**  
Cephalanthus occidentalis  
Clethra alnifolia  
Lindera benzoin  
Physocarpus opulifolius 'Center Glow'  
Rosa virginiana  
Rubus odorata  
Viburnum dentatum 'Blue Blaze'
- 5 **Small Shrubs**  
Ceanothus Americanus  
Chamaecyparis thyoides 'Top Point'  
Cornus canadensis  
Fothergilla major  
Ilex glabra 'Densa'  
Pachysandra procumbens  
Spiraea tomentosum
- Perennials**
- 6 **Medium to Tall Perennials**  
Aster novae-angliae 'Alma Potschke'  
Baptisia australis  
Chelone glabra  
Dennstaedtia punctilobula  
Eupatorium dubium 'Little Joe'  
Gentiana clausa  
Hibiscus moscheutos  
Iris versicolor  
Liatris scariosa var. novae-angliae  
Lobelia cardinalis  
Matteuccia struthiopteris  
Mertensia virginica  
Onoclea fruticosa 'Fireworks'  
Phlox maculata 'Rosalind'  
Polygonatum biflorum  
Salvia lyrata 'Purple Knockout'  
Trollius laxus
- 7 **Low Perennials**  
Caltha palustris  
Chrysogonum virginianum  
Eupatorium coelestinum  
Iris cristata 'Alba'  
Meehania cordata  
Osmonda cinnamomea  
Senecio aureus  
Stylophorum diphyllum
- Ornamental Grasses**
- 8 **Low Grasses**  
Carex laxiculmus Blue Bunny™  
Carex stricta

### Plant Tips

Use shredded hardwood mulch in your American Beauties Native Plant Rain Garden. Mulch replenishes the organic matter in the soil, prevents erosion and reduces weeds. Shredded bark spread at a 2" thickness will provide the best results. Always keep the mulch away from the plant trunks and stems.